

### MODELS

#### Sky Base - 2.0



- 65,000 BTU max cooling capacity
- Manual airflow and cooling adjustment
- No Sound Dampener

#### Sky Performance Plus - 2.0



- **126,500 BTU max cooling capacity**
- Manual airflow and cooling adjustment
- **Temp & Humidity Sensors that cap the cooling based on ambient conditions.**
- **Sound Dampener**

#### SMART Plus Sky - 2.0



- 126,500 BTU max cooling capacity.
- **Autonomous airflow and cooling adjustment**
- **Trailer Cooling Optimization Package (Lidar, Infrared Temp Sensor, Distance Sensor)**
- Sound Dampener
- **LED Light**

### MOUNTING SYSTEMS

All Models work with all Mounting Systems

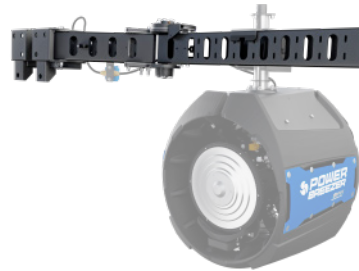
#### Single Arm - Right



##### Mounting Point / Method:

- **Concrete Wall** / Concrete wedge Anchors
- **Non-structural Steel H-Beam or I-Beam** / Welding Kit to steel, Bolting Kit into steel
- **Bollard** / Clamping Kit around bollard (advance lead time and purchase)

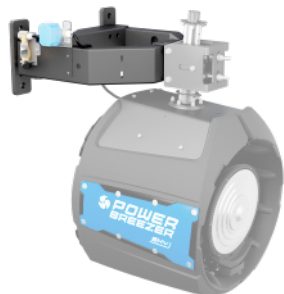
#### Single Arm - Left



##### Mounting Point / Method:

- **Concrete Wall** / Concrete wedge Anchors
- **Non-structural Steel H-Beam or I-Beam** / Welding Kit to steel, Bolting Kit into steel
- **Bollard** / Clamping Kit around bollard (advance lead time and purchase)

#### Horseshoe

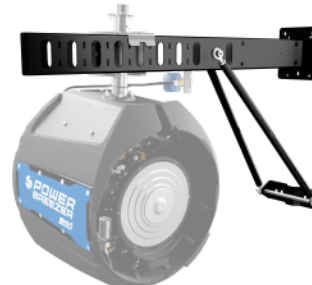


*NOTE: Sound Dampener cannot be used with the Horseshoe Mount.*

##### Mounting Point / Method:

- **Concrete Wall** / Concrete wedge Anchors
- **Non-structural Steel H-Beam or I-Beam** / Welding Kit to steel, Bolting Kit into steel, Clamping Kit around steel (advance lead time and purchase)

#### Street Light



##### Mounting Point / Method:

- **Concrete Wall** / Concrete wedge Anchors
- **Non-structural Steel H-Beam or I-Beam** / Welding Kit to steel, Bolting Kit into steel, Clamping Kit around steel (advance lead time and purchase)

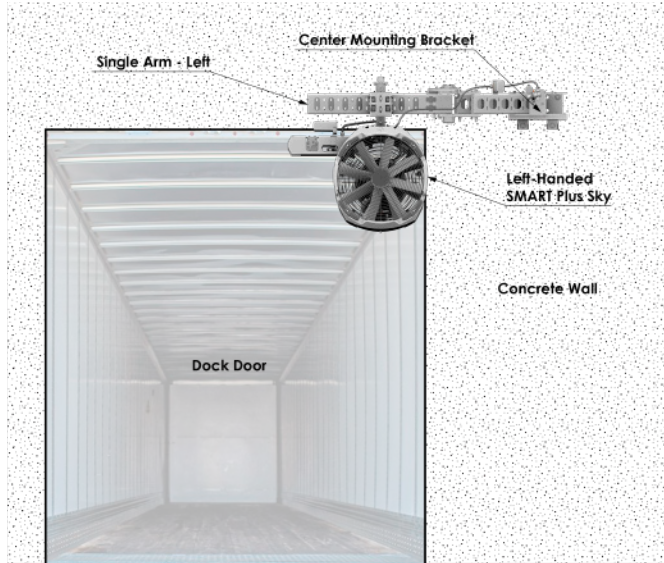
## MOUNTING SYSTEMS – Single Arm Right vs. Left

When determining the type of single arm mounting system needed use the following:

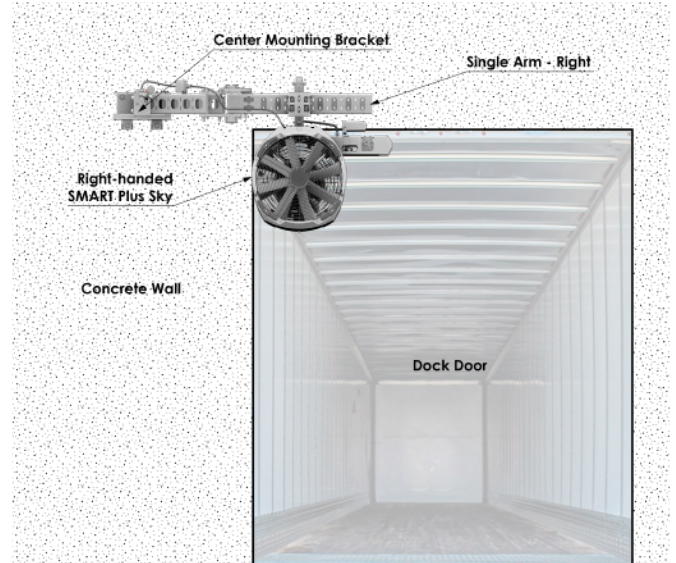
- Position your point of view so that the **Center Mounting Bracket (CMB)** is between you and the mounting surface.
- If the Arm extends away from the CMB to your right side it is a **Single Arm - Right**.
- If the Arm extends away from the CMB to your left side it is a **Single Arm - Left**.

NOTE: Please review the orientation of Single Arm Mounts carefully before ordering.

### Single Arm - Left



### Single Arm - Right



## SPECIFICATIONS AND COMPONENTS

### SPECIFICATIONS

(SMART Plus Sky Model)

Cooling Capacity	Up to 126,500 Btu/hr			
Wind Range	Up to 100 feet (30 meters)			
Air Speed (Miles Per Hour)	10 Ft.	20 Ft.	40 Ft.	60 Ft.
	22	14	7	6
Variable Atomized Cooling Control	Yes			
Autonomous Modes	Misting, Air Speed, Auto Shut Off			
Amps and Voltage	12A at 120V or 6A at 277V			
Electrical Connection	Disconnect Switch			
Weight	187.5 lbs. (85.0 kg)			

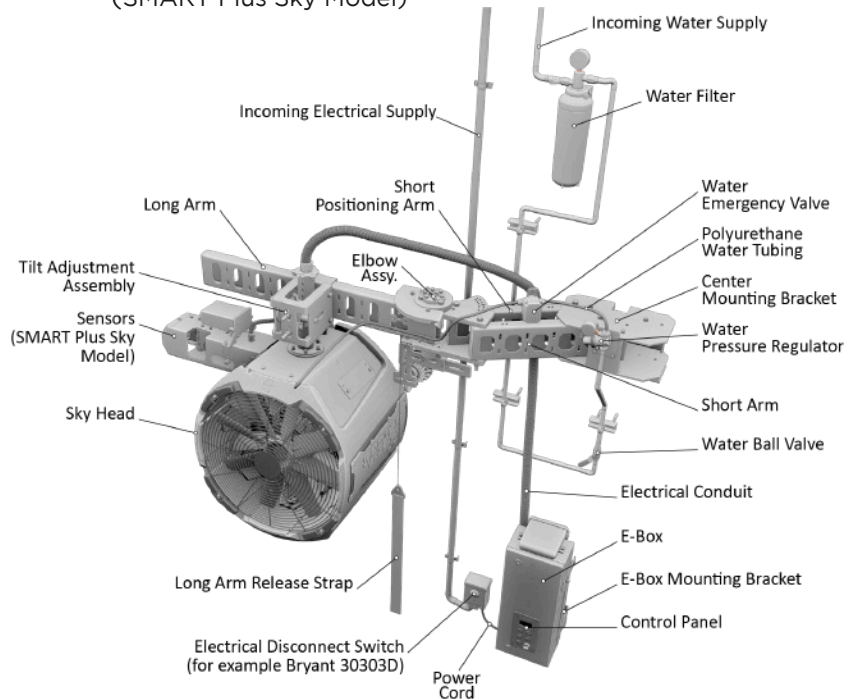


**ETL Certified**  
(USA and Canada)

**OSHA Compliant**

### COMPONENTS

(SMART Plus Sky Model)



NOTE: Images of SMART Plus Sky units in the above illustrations are shown without the Sound Dampener to provide increased clarity.



4835 Sirona Drive, Suite 400  
Charlotte, NC 28273

FOR MORE INFORMATION PLEASE CONTACT US:

[PowerBreezer.com](http://PowerBreezer.com) | [sales@powerbreezer.com](mailto:sales@powerbreezer.com)

U.S. 844.233.5673 | Int'l. 001 954 418 4530