

# Power Breezer<sup>®</sup>

WWW.POWERBREEZER.COM

## USER'S MANUAL Version A



THE ULTIMATE MOBILE COOLING SOLUTION!

Manufactured by Maxify Solutions, Inc. | Charlotte, NC | Dedicated to the employment of U.S. Veterans

# Table of Contents

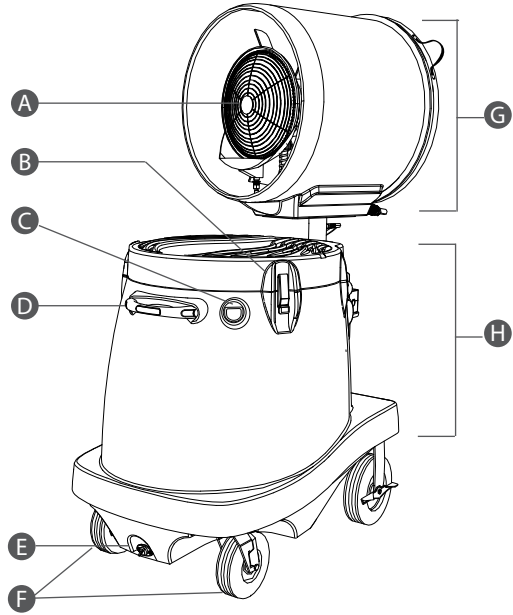
---

<b>I.</b>	<b>Key Components</b>	<b>3</b>
<b>II.</b>	<b>Setup</b>	<b>5</b>
	1. Mounting the fan head	5
	2. Connecting the hoses	7
	3. Using the correct outlet	9
	4. Adding water to the tank	10
	5. Adjusting the misting level	11
	6. Turning on your unit	12
<b>III.</b>	<b>Disassembly</b>	<b>13</b>
	1. Disconnecting the hoses	14
	2. Dismounting the fan head	15
<b>IV.</b>	<b>Transporting your unit</b>	<b>17</b>
<b>V.</b>	<b>Maintaining your unit</b>	<b>18</b>
	1. Lubricating the bushings	18
	2. Cleaning the water pump	19
	3. Maintaining water water tank	20
	4. Maintaining fan head and motor	21
	5. Additional Tips and Hints	21
<b>VI.</b>	<b>Troubleshooting</b>	<b>22</b>
<b>VII.</b>	<b>Warranty</b>	<b>23</b>
<b>VIII.</b>	<b>Contact Information</b>	<b>24</b>

# I. KEY COMPONENTS

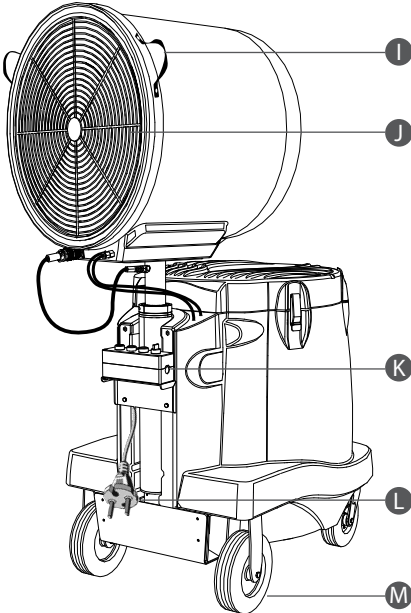
## Front View

- A - Atomizer
- B - Heavy duty lid latches
- C - Tie downs
- D - Handle
- E - Drain plug
- F - Front casters
- G - Fan Head
- H - Tank

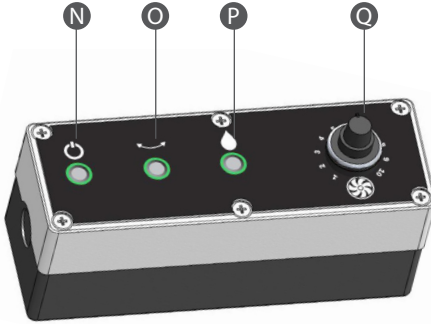


## Rear View

- I - Straps
- J - Fan
- K - Control box
- L - Power cord
- M - Rear wheels with brake



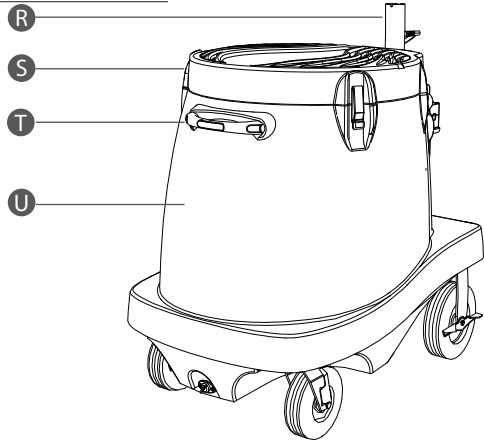
Control Box View



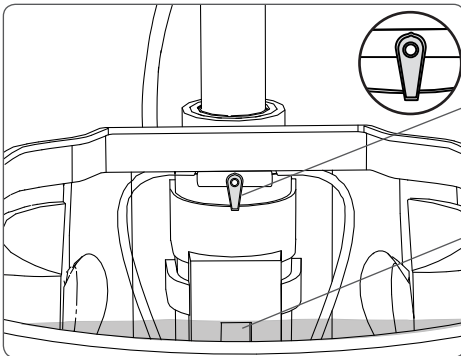
- N - Power - **on/off**
- O - Rotation - **on/off**
- P - Atomizer (Misting) - **on/off**
- Q - Fan - **Adjust speed**

Storage View

- R - Head Support Pole
- S - Lid
- T - Handle
- U - Water tank



Reservoir View



- V - Water valve
- W - Reservoir

## II. SETUP

### 1. Mounting the Fan Head



To set up your Power Breezer, you will need:

- 2 people
- An AC outlet (110v or 220v)
- Access to water to fill the tank

Remember: lift **fan head** only by the black outer shell from the top and bottom.

Never lift from the fan guards or metal disk.

***Fan head weighs ~ 90 lbs.  
2 people will be needed***



**1a.** Before you get started, be sure to lock each of the **rear wheels** by pressing down on the brakes to set them to the **LOCK** position.

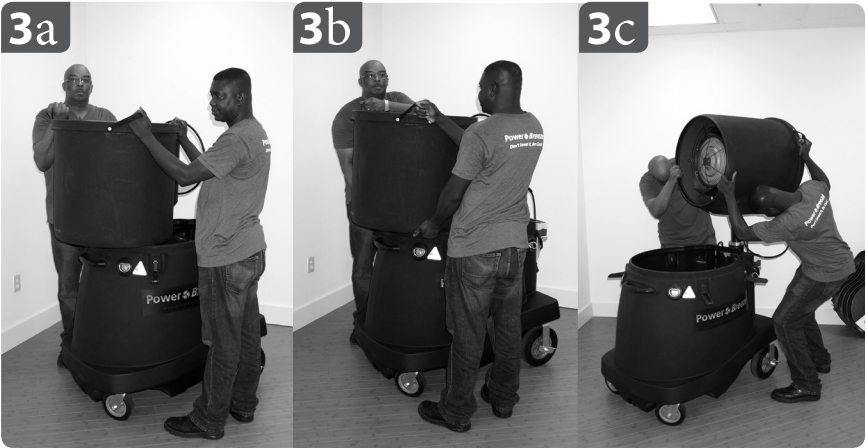
**1b.** Unlock the 4 **lid latches** and remove the lid.

**1c.** Remove the blue **dust cap** off the **head support pole**.



**2a.** To lift the **fan head** out of the **tank**, each person should stand on either side of Power Breezer.

**2b.** Each person should hold the fan head by a **strap** with one hand and by the shell near the **base of the head**, as shown.



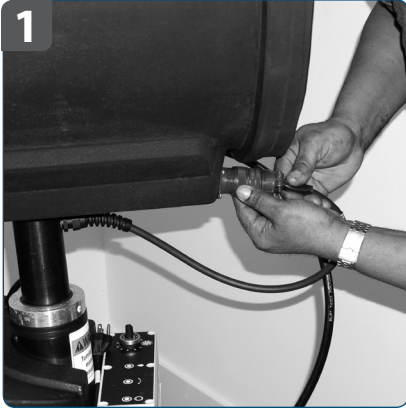
- 3a.** Lift the **fan head** straight up and out of the **tank**. Carefully rest it on the **edge of the tank** opposite of the **support pole**, as shown.
- 3b.** Adjust your grip so that each person has one hand on a **strap** and one hand on the **bottom** of the **support pole**.
- 3c.** Once again, lift the **fan head** and **align it with the head support pole**. Turn the **fan head** until you feel it engage.



Once installed, the **atomizer** (metal disk) will be facing the **tank**, air will be blown over the **tank** when the unit is turned on.

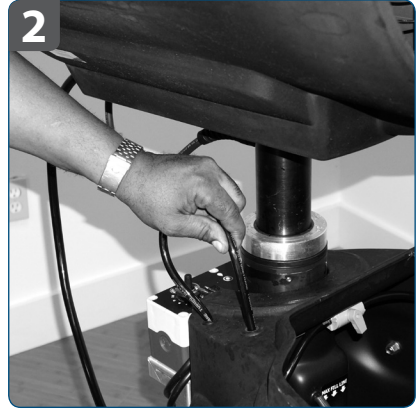
## 2. Connecting the hoses

---

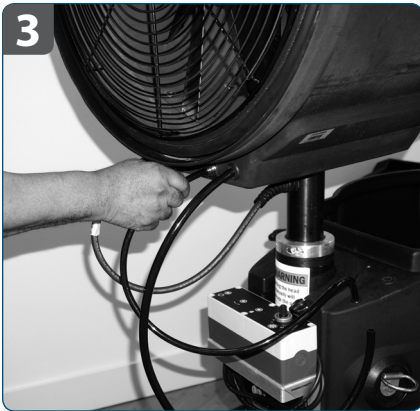


Insert **fan head power connector** into fan head. Ensure female end of power connection is aligned to male connector and *twist* on.

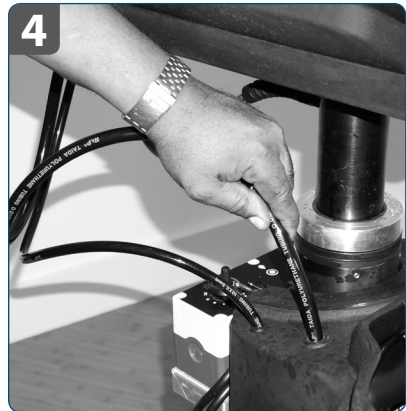
*Tighten fully to prevent water damage.*



Remove **water inlet hose** from the front hole in the **tank**.



Insert **water inlet hose** into **bulkhead fitting**. Ensure that connection is sealed.



Insert **atomizer drain hose** into the front hole on top of the **tank**, from where the water inlet hose was originally removed.

**Drain hose** should not be submerged below water line.



Once assembled, the **drain hose** should be flexible, but not so loose that water gets backed up in the hose.



### 3. Using the Correct Outlet

---

If your unit has been shipped with a GFCI power cord:

Plugging your GFCI-equipped Power Breezer into a GFCI outlet will most likely cause one of the GFCI units to trip.

However, if your unit is **NOT** equipped with a GFCI unit, be sure to plug your Power Breezer into a GFCI outlet.

**1** IF EQUIPPED WITH A GFCI:



Plug your Power Breezer into any standard outlet. **DO NOT** plug your unit into a GFCI outlet.

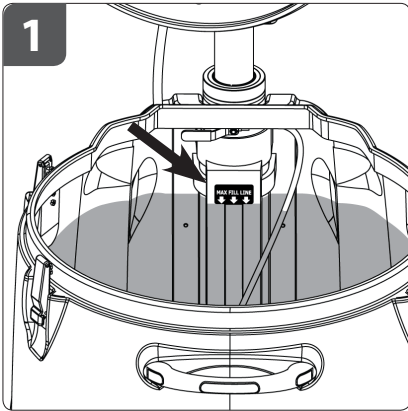
**2** HOWEVER IF **NOT** EQUIPPED WITH A GFCI:



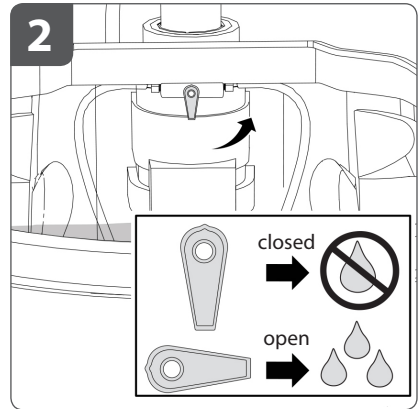
For safety, only plug your unit into outlets equipped with GFCI. **Do NOT plug into standard outlets without a GFCI feature.**

*\*requires 110v or 220v*

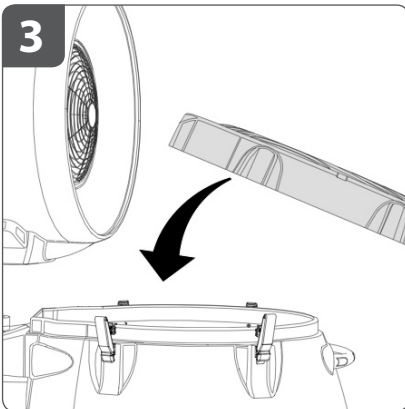
## 4. Adding water to the tank



Do not fill the tank above the **max fill level**, as shown. If tank is filled past this level, water may leak out of the tank.



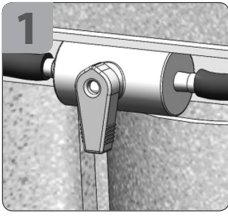
The **water valve** can be adjusted for optimal performance according to climate. To adjust, please follow the steps on the next page.



Once tank has been filled to the desired level, place **lid** on tank and close all 4 **lid latches**.

## 5. Adjusting the misting level:

---



Start with the **water valve** closed, at the 6 o'clock position as shown.

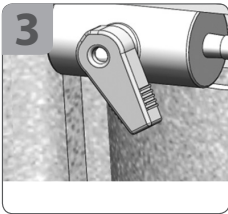


**2a.** Set fan speed to 4.

**2a.** Power unit on and allow it to run for 15 seconds to warm up.

**2b.** After 15 seconds, start the atomizer. Do not turn the oscillation (rotation) on.

*\*See Control Box Settings below for reference*



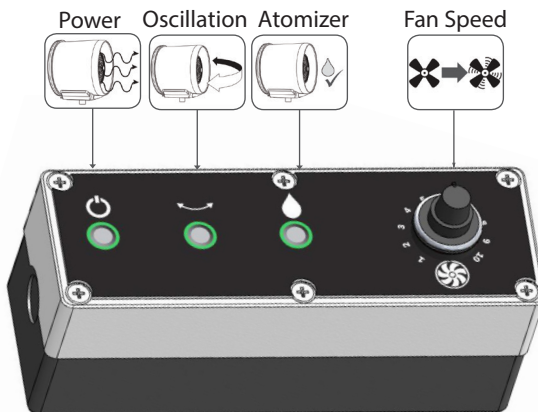
**3a.** Open the valve slightly and check the distance of the mist.

**3b.** If there is a strong mist at 6 feet away, then the moisture setting is too high for conditions. To lower, rotate the water valve lever back towards the 6 o'clock position.

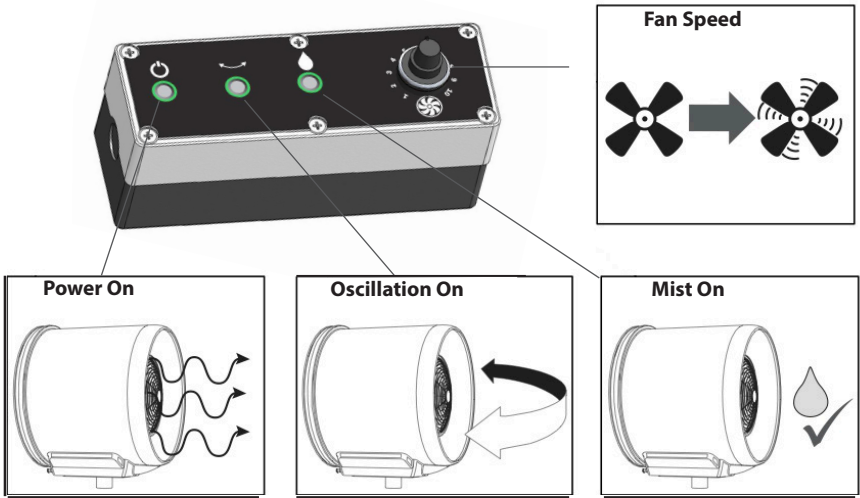
*\*Optimal moisture settings can also be adjusted according to personal preference.*

## Control Box Settings:

---



## 6. Turning on your unit



- Prior to turning on unit for the first time, set fan speed to 4.
- To turn on unit, press the power button down once until it clicks.
- Allow unit to power on for 20 seconds.
- Once unit has fully powered on, adjust fan speed as desired.



## DISASSEMBLY



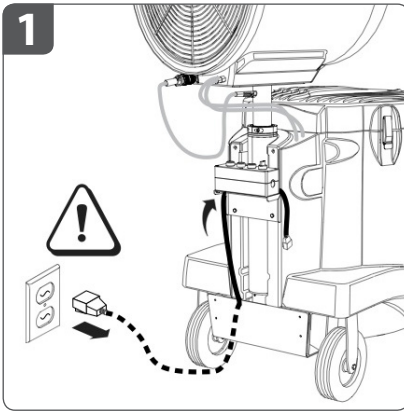
To disassemble your Power Breeze, you will need:

- 2 people

Remember :

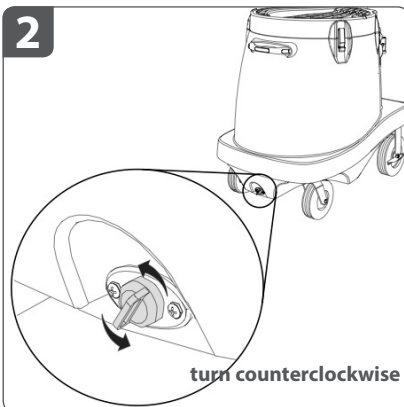
- Lift **fan head** only by the black outer shell from the top and bottom.
- **Never** lift from the fan guards or metal disk.

***Fan head weighs ~ 90 lbs.  
2 people will be needed***



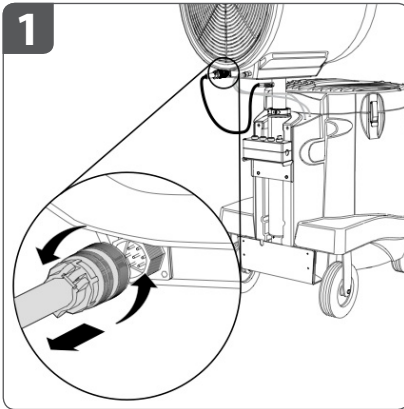
**1a. Unplug power cord.**

**1b. Be sure to lock each of the rear wheels** by pressing down on the brakes to set them to the **LOCK** position.

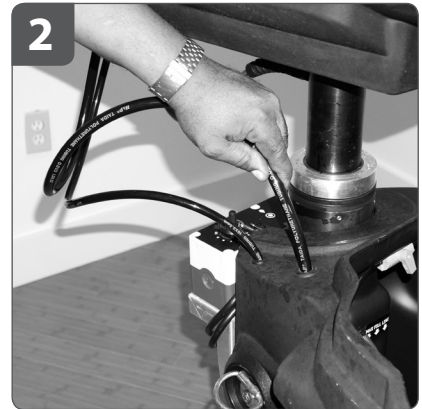


Unplug the **drain plug** and fully drain the tank.

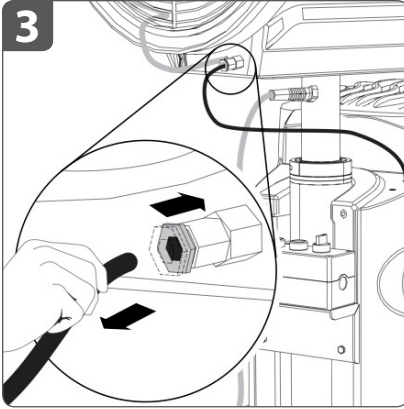
## 1. Disconnecting the hoses



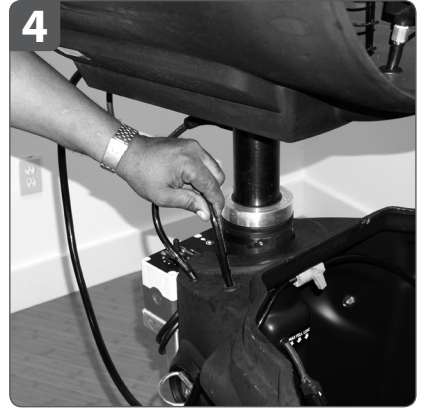
Disconnect the **fan head power connector** from the **bulkhead fitting**.



Take **atomizer drain hose** out of the front hole on top of the **tank**.

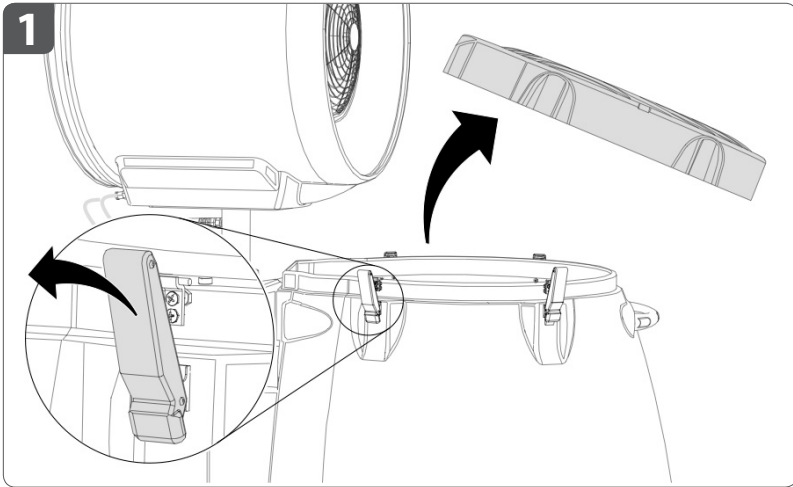


Depress **bulkhead fitting** with one hand while pulling **inlet hose** with the other hand to remove the **inlet hose**.



Store the water **inlet hose** in the front hole on top of **tank**, from where atomizer drain hose was removed.

## 2. Dismounting Fan Head



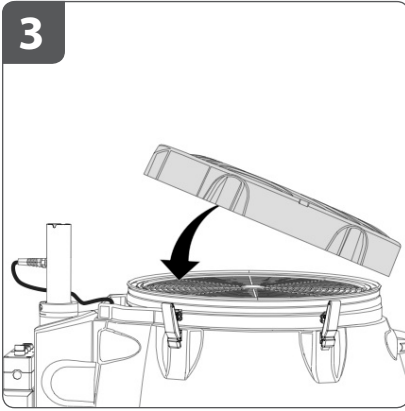
Unlock **lid latches** (4) and remove **lid**.



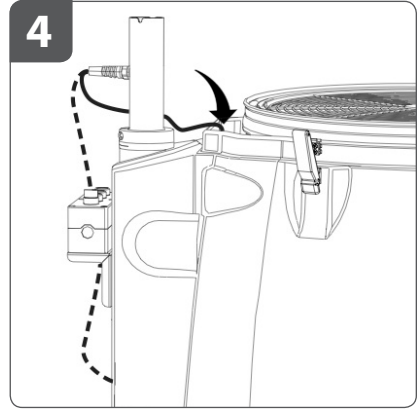
**2a.** Lift the **fan head** straight up and off the **head support pole**.

**2b.** Carefully rest it on the **edge of the tank** opposite of the **support pole**, as shown.

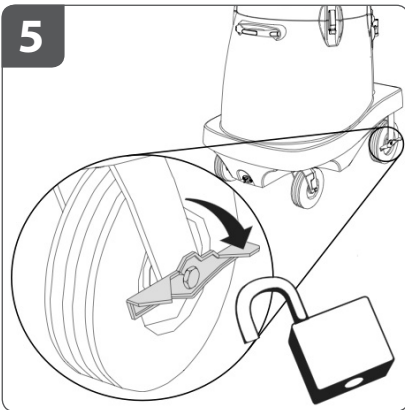
**2c.** Adjust your grip to hold the **fan head** by the **straps**, then carefully lower the **fan head** into the **tank**.



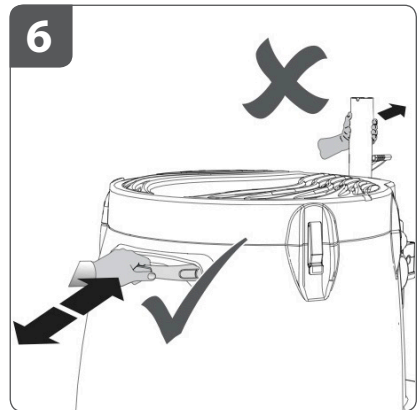
Place **lid** on **tank** and lock **latches** (4).



Wrap the **power cord** around support pole



To unlock **wheels**, press down on lever.

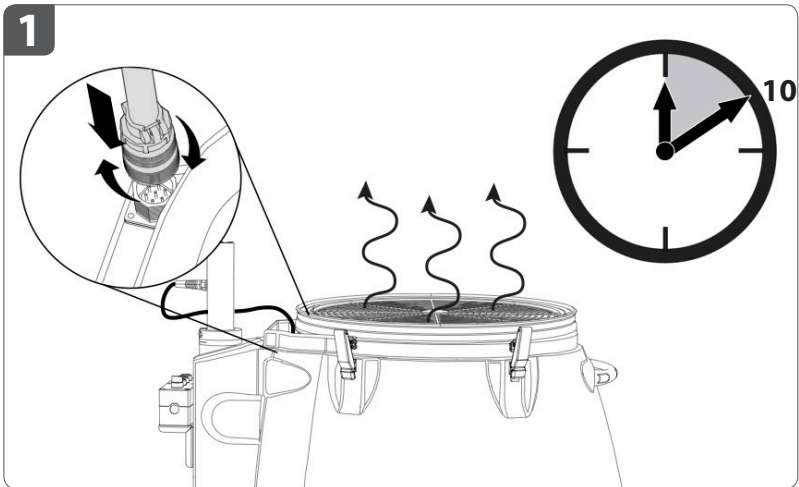


When moving unit, be sure to use the **handle** and not the support pole.

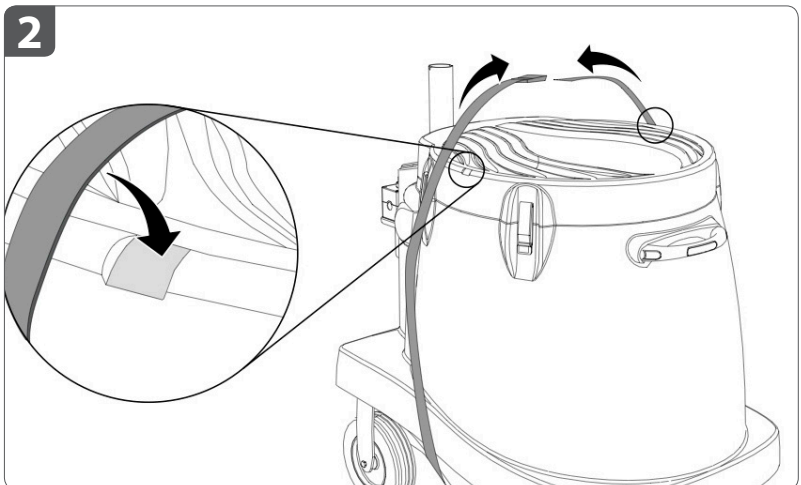


## **IV. TRANSPORTING YOUR UNIT**

- » We recommend using tie-downs when transporting your Power Breezer to limit movement and prevent damage.
- » For long term storage, make sure that the tank is fully dry. If it is not dry, you may use the fan to dry the tank.
  - With the fan head in the tank, reattach the power connector and turn on the fan on a medium speed. The tank will dry in about 10 minutes to dry.



- » Secure the unit by wrapping a band around it, following the grooves on the tank with the strap.



## **V.** MAINTAINING YOUR UNIT

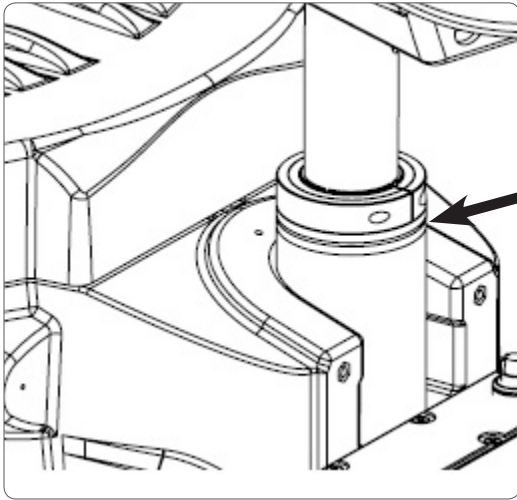
For the best performance and longest life of your Power Breezer, we recommend the following maintenance on your unit every **30 days** and **prior to storing for extended periods of time**.

### 1. Lubricating the bushings

---

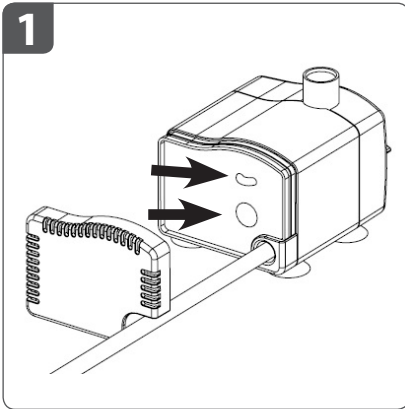
#### » **Proper Lubrication of Bushings:**

- Use a silicone lubricant, such as **WD-40 for plastics**, to lubricate your bushings every 30 days.
- Spray the lubricant so it penetrates above and below the **disk bushing** (the thinnest bushing in the rotational assembly). Spray all the way around the assembly.

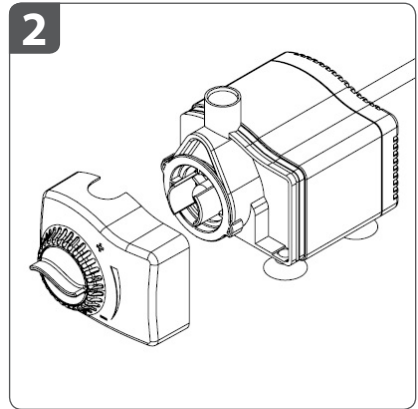


## 2. Cleaning the water pump

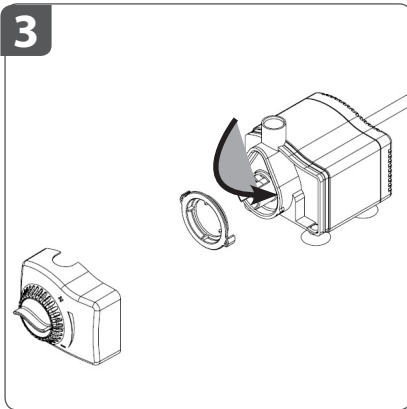
It is important to clean your pump. Dirty pumps will continue to run dry if they are not serviced even though they are equipped with auto shut off.



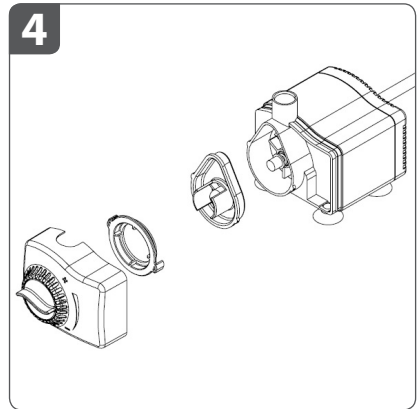
Remove the rear cover by pulling the cover off.  
Clean sensors with a brush and water, use a mild soap if necessary.  
**Do this weekly.**



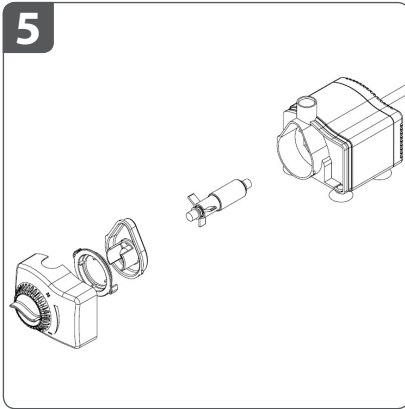
Pull the front cover to remove it.



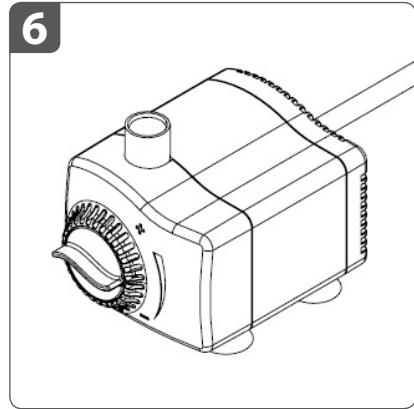
Remove locking ring by turning counter clockwise.



Pull off impeller cover.

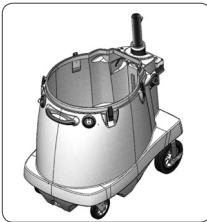


Remove impeller assembly and clean with soap and water.



Reassemble water pump.

### 3. Maintaining the water tank



The Power Breezer unit was designed with easy cleaning in mind.

- Once a week drain the tank and allow for the tank to dry out overnight.

- If the inside of the tank becomes slippery/slimy to the touch, drain the unit. You can also clean the tank by putting a few drops of liquid soap in water and brushing the inside of the tank with it. Rinse the tank with a hose, then open the drain at the bottom and leave the lid off to allow to air dry.

- If mildew develops, you can flush the system out with a little bleach (run the Power Breezer). Following the bleach treatment, flush the tank out with clean water and let air dry.

## 4. Maintaining the fan head and motor

---



If you see a collection of dust or debris in the head of the unit, clean the unit with a hose. Spray from the front of the fan head (facing the atomizer towards the back). Use a clean cloth to wipe it down.



Avoid spraying water directly into the vent.

## 5. Additional Tips and Hints

---

Remember, while your Power Breezer is robust and durable, it must still be handled with a certain level of care. Misuse or failure to properly care of the unit will void the warranty.

- » When transporting your unit, make sure that the unit is kept upright and tied down properly – remember it's on wheels!
- » When transporting over long distances, disassemble the Power Breezer and store the head in the tank to prevent damage.
- » NEVER move your Power Breezer by the fan head. Doing so will not only damage your unit, but it is also much more difficult to move your Power Breezer by the head than by the body.
- » NEVER manually rotate the head, doing so will damage the rotational assembly. Always use the controls to rotate the head.
- » To properly power off your Power Breezer while it is rotating, first stop the oscillation, and then power off your unit.
- » Always drain the tank after each use.

## **VI.** TROUBLESHOOTING

- » **Atomizer not draining properly:**
  - Adjust drain hose to ensure curve of hose is sloping downward into the tank. Drain hose should not be angled too sharply and it should not be drooping too much as this could cause backage in the hose. Also, ensure the drain hose is not submerged below the water line in the tank.
- » **Atomizing disk is spinning, but there is no water:**
  - First, verify that the water pump is running. (Page 12).
  - If water is not running, check the connection by removing the **water inlet hose** from the **bulkhead fitting** in the fan head. Ensure that water is flowing at this end, if it is not flowing at this end then check for blockages within the tubing. (Page 11, Image 3).
  - If water is running, but there is no water pumping, the problem is mechanical. Check for the following:
    - Check that the water valve is open. (Page 10, Image 5).
    - Check that the tubing adapter is intact.
    - If the above steps fail, the pump must be replaced – contact us.
- » **Rotation pipe makes squeaking noise:**
  - Your unit should be maintained by lubricating the bushings monthly using a silicone-based lubricant (for plastics only). If you have not done so in the past, this is likely the cause of the squeaking. First, check the integrity of the rotational assembly to make sure it has not been damaged. If there is any damage to the assembly, contact us. If not, proceed with lubrication.
  - The lubricant should be applied on the top and bottom surfaces of the disk bushing where it mates with the rotation bushing and the 4 inch bushing. See page 20 for a detailed image.
- » **Unit shuts off:**
  - If your Power Breezer shuts off unplug it. Wait 20 seconds, then plug it back in and restart your unit.
  - If your Power Breezer is equipped with a GFCI unit, also ensure that your unit is not plugged in to a GFCI outlet.
- » **Unit will not roll:**
  - Ensure wheel brakes are in the OFF position.

## VII. WARRANTY

### 1. Power Breezer Limited Warranty

---

For two (2) years from date of shipment to the first purchaser, Maxify Solutions, Inc. ("Manufacturer") warrants the fan, fan blades, fan motor, air straighteners and the polyethylene exterior of the Power Breezer® unit to be free from defects in materials or workmanship. Those components found, upon examination by factory-authorized personnel, to be defective in material or workmanship will be repaired or replaced with new or remanufactured parts at Manufacturer's or authorized dealer's option and without charge. All other Power Breezer® components have a one (1) year warranty from the shipment date against defects in materials or workmanship. Transportation charges on parts submitted for replacement or repair under this warranty shall be borne by the purchaser. Any and all repairs and replacements must be performed by Manufacturer or an authorized Power Breezer® dealer or representative. Warranty claims must be made as soon as reasonably possible after a defect is discovered, but before the end of the warranty coverage on the particular part. When a warranty repair or replacement is needed, the Power Breezer® must be brought to the Manufacturer's or authorized dealer's place of business during normal business hours. A reasonable time must be allowed for the performance of repairs or replacements.

THESE WARRANTIES ARE THE ONLY EXPRESS WARRANTIES BY MANUFACTURER ON THE POWER BREEZER®. THESE WARRANTIES ARE LIMITED IN DURATION TO THE TIME PERIOD(S) OF THESE WRITTEN WARRANTIES. THESE WARRANTIES ARE IN LIEU OF ALL OTHER OBLIGATIONS, LIABILITIES OR WARRANTIES, WHETHER EXPRESS OR IMPLIED. THESE WARRANTIES DO NOT COVER:

- (1) NORMAL DETERIORATION OR FADING OF COLOR, COSMETIC OR APPEARANCE ITEMS;
- (2) DAMAGE OR MALFUNCTION DUE TO IMPROPER REPAIR DUE TO ANY UNAUTHORIZED ALTERATION OR MODIFICATION MADE TO THE POWER BREEZER®;
- (3) USE OF CIVILIAN/INDUSTRIAL MODELS IN MILITARY APPLICATIONS OR ON MILITARY INSTALLATIONS
- (4) DAMAGE OR MALFUNCTION DUE TO ABUSE, NEGLIGENCE, ACCIDENT OR FIRE;
- (5) DAMAGE CAUSED BY A NON-COVERED, UNAUTHORIZED PART; AND
- (6) FAILURE TO FOLLOW MANUFACTURER'S CLEANING AND MAINTENANCE GUIDELINES.

MANUFACTURER AND ITS AUTHORIZED DEALERS AND DISTRIBUTORS SHALL NOT BE LIABLE FOR ANY LOSS OF USE OF THE POWER BREEZER®, FOR ANY ALTERNATE EQUIPMENT, FOR ANY DAMAGE TO GOODS, COMMERCIAL LOSS, LOSS OF TIME OR INCONVENIENCE, OR FOR ANY OTHER INCIDENTAL OR CONSEQUENTIAL DAMAGES.

For more information, please go to <http://www.powerbreezer.com>.

## **VIII.** CONTACT INFORMATION

### General Information or Product/Installation Support

Email: [customerservice@powerbreezer.com](mailto:customerservice@powerbreezer.com)

Phone: 844-233-5673

### For Sales Information

[sales@powerbreezer.com](mailto:sales@powerbreezer.com)

Phone: 844-233-5673

For user videos please consult: [www.youtube.com/powerbreezer](http://www.youtube.com/powerbreezer) or

<http://www.powerbreezer.com>

### User Videos

[www.youtube.com/powerbreezer](http://www.youtube.com/powerbreezer)

[www.powerbreezer.com](http://www.powerbreezer.com)

### Follow Us

<https://www.facebook.com/PowerBreezer>

@PowerBreezer on Tweeter



## AVAILABLE ACCESSORIES



**Power Breezer Ducting Kit:** Contains an easy to attach Power Brezer head attachment with a reducer and 10 feet of 20" wide ducting.

Power Breezer Ducting Kit: PB-600-005-01



**Head and Tank Covers:** Waterproof covers with storage bags. Protect your Power Breezer from the elements and keep your unit free from dust while in storage. Head and Tank Covers Sold independently or as a set.

Head Cover w/Storage Bag:

PB600-001-01

Tank Cover w/Storage Bag:

PB600-002-01

Head and Tank Cover Set w/Bag:

PB600-003-01

Contact us for more information on ordering these and other parts and accessories.

**Power**  **Breezer**<sup>®</sup>

[WWW.POWERBREEZER.COM](http://WWW.POWERBREEZER.COM)

[www.powerbreezer.com](http://www.powerbreezer.com) | 844-233-5673 | [customerservice@powerbreezer.com](mailto:customerservice@powerbreezer.com)