

Sky Sound Dampener Installation

SCOPE:

This Procedure Guide provides proper written instructions to ensure standard methodology for Sky Sound Dampener Installation.

REVISION HISTORY

Rev. No.	Date	Author	Comment
1	Oct 20, 2022	Steven Shi	Original Document

This Information is Proprietary:

No part of this document shall be reproduced, stored in a retrieval system, or transmitted by any means, electronic, mechanical, photocopying, recording, or otherwise, without written permission from the publisher. Although every precaution has been taken in the preparation of this Guide, the publisher and author assume no responsibility for errors or omissions, nor is any liability assumed for damages resulting from the use of the information contained herein. The information contained herein is subject to change without notice.

Materials Required:

- 1x Sound dampener assembly (150-000-030-A)
- 1x Saddle lock bracket (150-302-439-1)
- 1x Mohawk lock bracket (150-302-444-1)



Tools Required:

- 2x 13mm socket wrench

Persons Required:

- 1

Process:

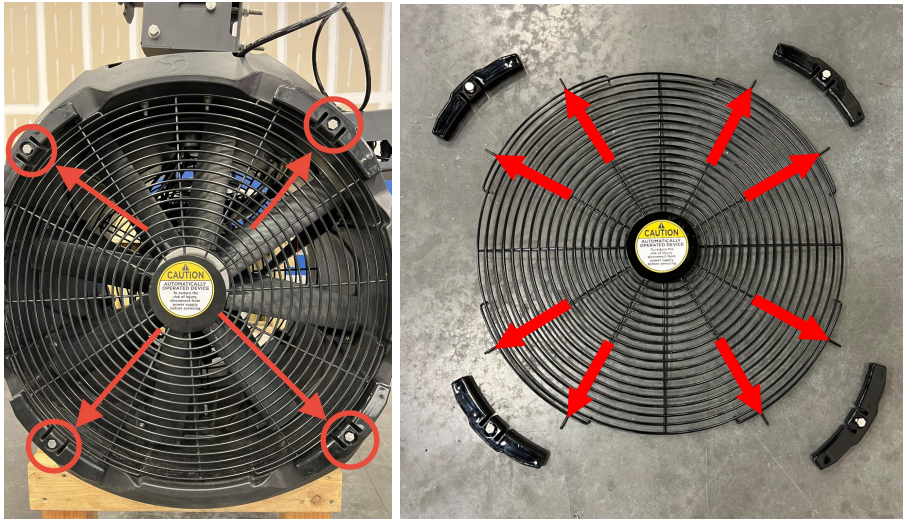
WARNING: Provide for and **maintain a clear work area around and under the Sky's Head while and until the completion of the Sound Dampener Installation.** Failure to do so may result in unintentional injury to personnel and or equipment. Follow your facility's safety protocols.

1. Deactivate the Sky unit before installing the Sound Dampener Assembly by turning **OFF** the disconnect switch. AND OR by following your facility's tag and lock-out protocols.



2. Verify you have all the materials and tools listed for this installation procedure.
3. Remove all four bolts from the handle bases and take off the rear guard. Take care to maintain a controlled hold of the rear guard as it may come loose abruptly after the last handle base is removed.

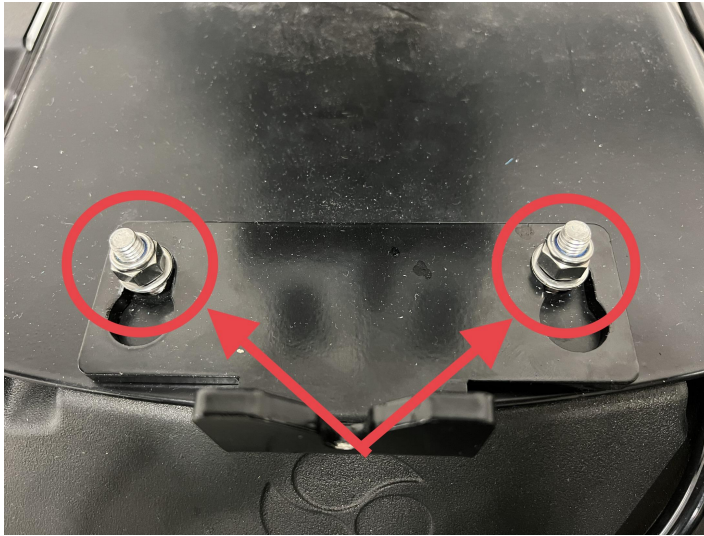
NOTE: Take note of the rear guard's orientation when it is being removed. There are tines that extend out past the guard's edge that are used to hold it in place with the handle bases.



4. Loosen the rear top two M8 saddle nuts until you have 1/4in clearance with two 13mm socket wrenches (one holds the saddle bolt inside the shroud and one loosens the M8 nut).



5. Attach the Saddle Lock Bracket (150-302-439-1) to the saddle through the keyholes.



6. Re-tighten the top two M8 nuts.
7. Loosen the shroud bottom bolt (M8x85) until you have 1/4in clearance.

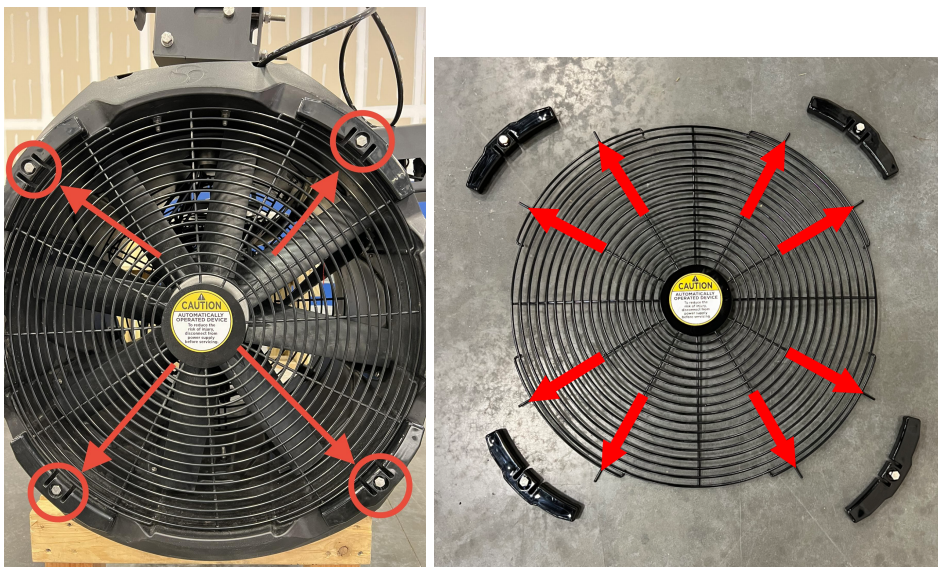


8. Attach the Mohawk Lock Bracket (150-302-444-1) to the shroud through the keyhole.

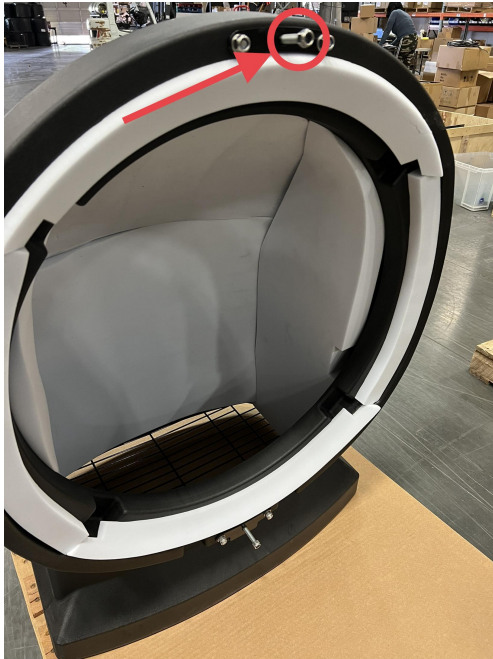


9. Re-tighten the Shroud bottom bolt (M8x85) while holding the Mohawk Lock Bracket straight from the keyhole to the back of the Sky shroud.
10. Re-install the handle bases and rear guard you took off from step_3.

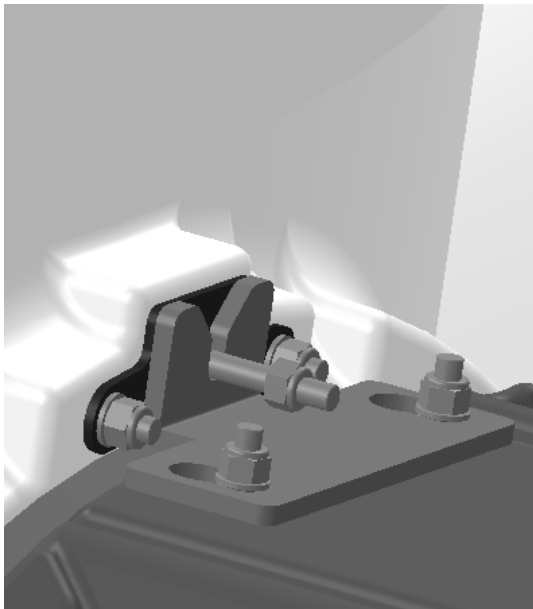
NOTE: Tines that extend past the Guards edge go under the handle bases.



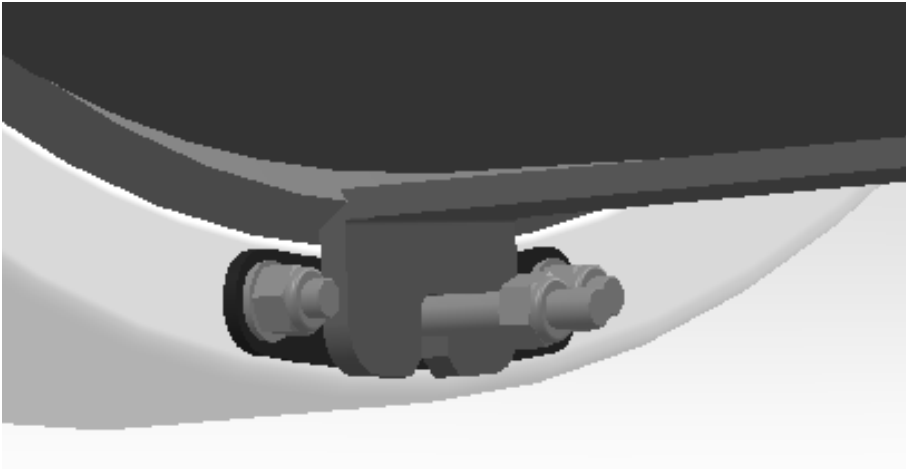
11. Remove the middle bottom M8 nut from the Sound Dampener Assembly (150-000-030-A) and retain it.



12. Hang the Sound Dampener Assembly to the Saddle Lock Bracket as shown below.



13. Re-insert the M8 nut you took out from Step_11 to the bottom of the Sound Dampener Assembly through the Mohawk Lock Bracket.



14. Tighten the top and bottom M8 nuts until the gap between the Shroud and the Sound Dampener has closed.



15. Sound Dampener installation complete.



16. Turn the disconnect switch back **ON**. AND OR remove tag and lockout safeties.

